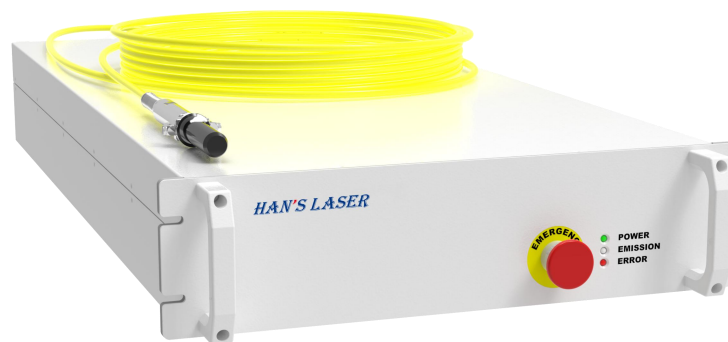


CW Fiber Laser

Single Module

3000 W

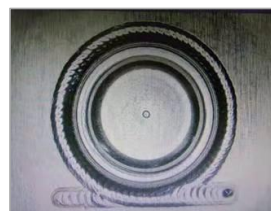
This compact, lightweight device features a high-efficiency photoelectric module, advanced electric control system, microsecond pulse response, and expert-level laser analysis for optimal performance and ease of use.



Features

- Mainly for cutting, welding, cladding, etc.
- Core diameter 30 / 50 / 100 μm , customizable
- Compact structure & real-time internal monitoring control system
- Selectable beam qualities, suiting more application scenarios

Applications

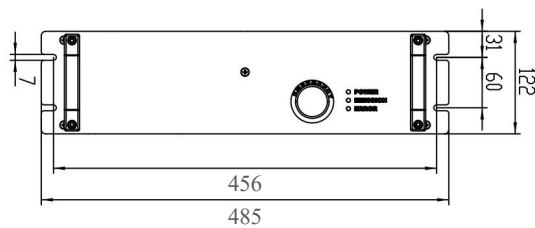


Parameters

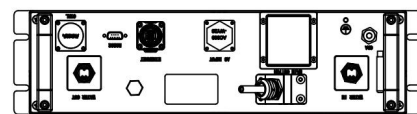
CW Fiber Laser - Single Module	
Optical Parameters	
Power	3000 W
Wavelength	1080 nm
3DB Bandwidth	6 ± 1 nm
Output Connector	QBH
Output Fiber Diameter	30 / 50 / 100 μ m (Customizable)
Output Fiber Length	20 m (Customizable)
Electro-optical Conversion Rate	> 40 %
Power Stability	± 1 %
Beam Quality	BPP < 1 / 2 / 4
General Parameters	
Operating Voltage	360 - 440 V, 50/60 Hz
Control Mode	External Control Interface / Network Port / Bus Control
Cooling	Water Cooling
Physical Properties	
Console Dimensions	485 mm \times 770 mm \times 122 mm (including handles) (L \times W \times H)
Laser Weight	< 46 kg

* All specifications are typical data and subject to change without notice due to product improvements.

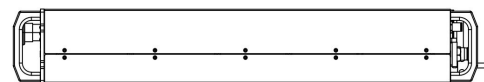
Laser Dimensions (mm)



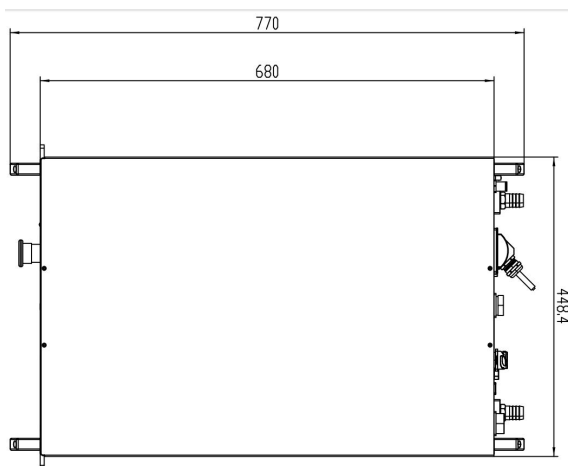
Front View



Back View



Side View



Top View

