

CW Fiber Laser

Single Module

1500 W

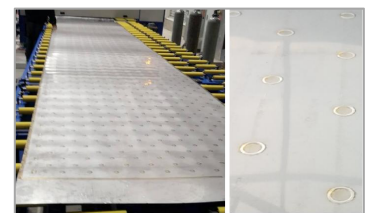
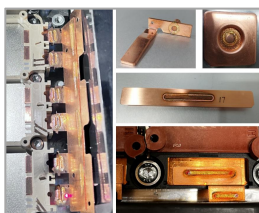
This compact, lightweight device features a high-efficiency photoelectric module, advanced electric control system, microsecond pulse response, and expert-level laser analysis for optimal performance and ease of use.



Features

- Mainly for laser welding, cutting, etc.
- Core diameter 25/50 μ m, customizable
- Compact structure & High-intensity laser beam
- Flat-top beam and uniform energy distribution, resulting in better welding effects

Applications



CW Fiber Laser - Single Module	
Optical Parameters	
Power	1500 W
Wavelength	1080 nm
3DB Bandwidth	3 ± 1 nm
Output Connector	QBH
Output Fiber Diameter	20/50 μ m (Customizable)
Output Fiber Length	10 m (Customizable)
Electro-optical Conversion Rate	> 40 %
Power Stability	± 1 %
Beam Quality	$M^2 \leq 1.4$ / $BPP \leq 2$
General Parameters	
Operating Voltage	AC 220 V, 50 Hz
Control Mode	External Control Interface / Network Port / Bus Control
Cooling	Water Cooling
Physical Properties	
Console Dimensions	482 mm \times 548 mm \times 122 mm (including handles) (L \times W \times H)
Laser Weight	< 35 kg

* All specifications are typical data and subject to change without notice due to product improvements.

Laser Dimensions (mm)

