

CW Fiber Laser

Multi Module

12000 W

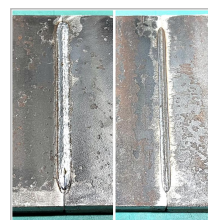
This laser features high power stability, > 40 % efficiency, and a smart control system for real-time monitoring and microsecond response, enhancing performance while saving energy.



Features

- Mainly for cutting, welding, cladding, etc.
- Core diameter 100μm, customizable
- Great anti-reflection capability, no need to worry about processing high-reflection material
- High reliability, long life period, and free-operation maintenance

Applications



Parameters

	CW Fiber Laser - Multi Module
Optical Parameters	
Power	12000 W
Wavelength	1080 nm
3DB Bandwidth	6 ± 1 nm
Output Connector	Q+ / HPC
Output Fiber Diameter	100 μ m (Customizable)
Output Fiber Length	25 m (Customizable)
Electro-optical Conversion Rate	> 40 %
Power Stability	± 1 %
Beam Quality	BPP < 4
General Parameters	
Operating Voltage	360 - 440 V, 50/60 Hz
Control Mode	External Control Interface / Network Port / Bus Control
Cooling	Water Cooling
Physical Properties	
Console Dimensions	535 mm \times 1110 mm \times 650 mm (excluding casters) (L \times W \times H)
Laser Weight	< 270 kg

* All specifications are typical data and subject to change without notice due to product improvements.

Laser Dimensions (mm)

