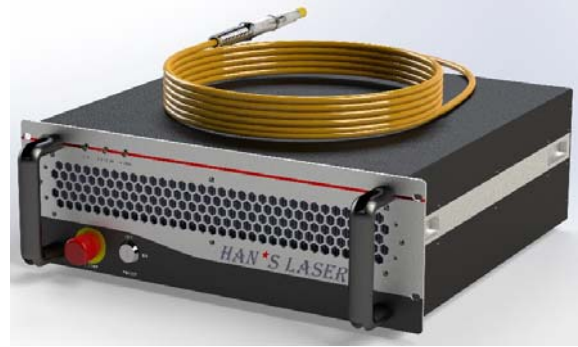


Air-cooled CW Fiber Laser

HFC SERIES

HFC300 & HFC300S



The HWQ300 & HWQ300S Fiber Laser are the brand-new Continuous Fiber Laser independently developed by Han's Laser and offers superior beam quality, high efficiency, and a compact size.

► Application

- Auto Parts
- Lithium Battery
- Medical Equipment
- Consumer Electronics
- Mobile Communication

► Features

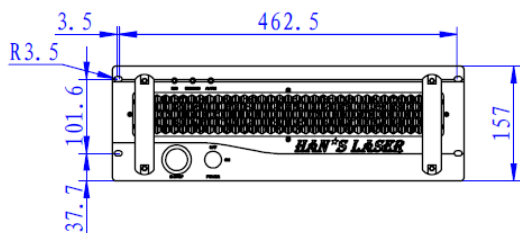
- Easy installation and integration
- Continuous/pulse mode, high peak power
- Zero consumables, maintenance-free for life
- Small weld spots, minimal heat-affected zone and deformation
- High photoelectric conversion efficiency, low power consumption
- Applications in consumer electronics, battery welding, and cutting

Technical Parameters

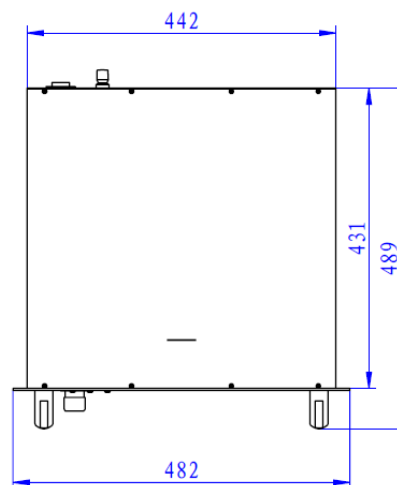
	HFC300	HFC300S
Optical Parameters		
Wavelength	1080 ± 10 nm	
Max. Average Power	CW Mode: 300 W	
Pulse Duration	0.05 ~ 50 ms	
Beam Quality	< 6	≤ 1.3
Fiber Core Diameter	50/100 μm	14/25 μm
Numerical Aperture	0.22	0.07
Max. Pulse Energy	3 J	
Max. Peak Power	300 W	
Red Guide Laser Power	> 0.1 mW	
Power Stability	≤ 3 %	
General Parameters		
Supply Voltage	AC 220 V ± 10 % @ 50 Hz	
Operation Temperature	10 ~ 35 °C	
Storage Temperature	- 40 ~ + 75 °C	
Relative Humidity	10 ~ 95 %, non-condensing	
Cooling	Forced Air	
House Keeping Function	Waveform Editing / Operation Parameters / Working Mode / Diagnosis	
Physical Properties		
Laser Dimensions	489 mm × 442mm × 157 mm (including handles) (L × W × H)	
Laser Weight	< 30 kg	

► All specifications are typical data and subject to change without notice due to product improvements.

Laser Dimensions (mm)



Front View



Left View

