

HC06

Laser Cutting Head

The Han's Focus HC06 cutting head delivers ultra-precise, high-speed laser cutting with enhanced stability and durability for industrial applications.

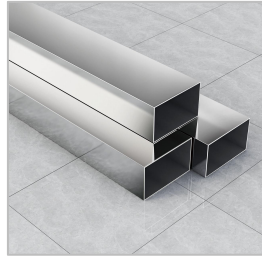


Features

- **Servo Focusing:** The focusing module is controlled by a servo motor, achieving high focusing accuracy and fast focusing speed
- **Height Adjustment Module:** compatible with various mainstream height adjustment systems in the market, the height adjustment module can be equipped with an integrated follow-up sensor, External sensor for amplifier
- **High Dust Resistance:** multiple protective sheets protect the internal lens; patented internal dust-proof technology effectively extends the lifespan of the lens
- **Bus Control:** Optional bus configuration, utilizing EtherCAT bus communication mode to control the focusing module

Applications

- Aerospace
- Shipbuilding
- Automobile Making
- Machinery Manufacturing

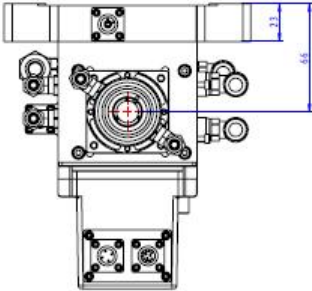
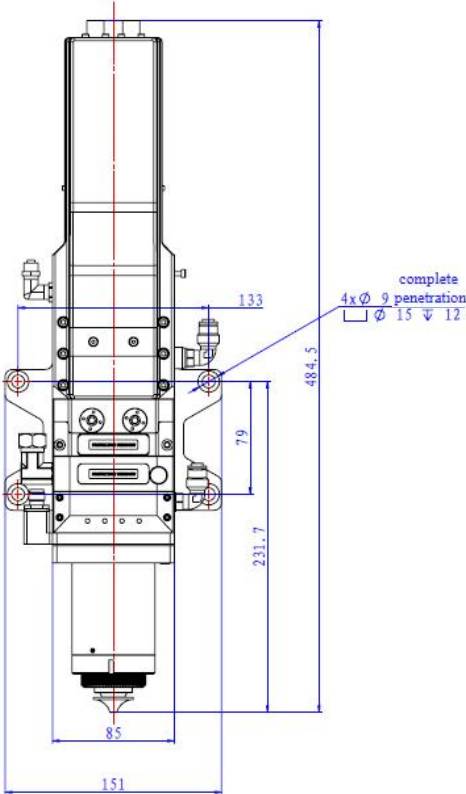
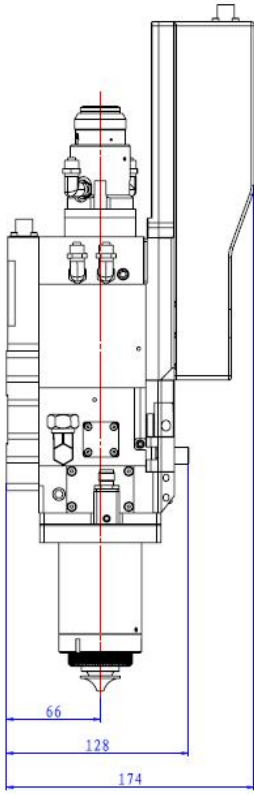


Parameters

	HC06
Technical Parameters	
Applicable Power	≤ 6 kW
Collimator Focal Length	100 mm
Focal Length	200 mm
Coaxiality Adjustment Range	± 1.5 mm
Vertical Focus Adjustment Range	- 30 ~ + 20 mm
NA	0.14
Max Gas Pressure	25 bar
Fiber Core Diameter	100 μm / 150 μm
Fiber Connector	QBH, G5, Q+, QD, LOE, etc.
Weight	≤ 7.5 kg
Ceramic Ring	Φ 31 mm
Threaded Nozzle	M11 * 0.75 mm

* All specifications are typical data and subject to change without notice due to product improvements.

Dimensions (mm)



* For reference only