

# Liner Guide

Linear Guide is a mechanical component used for supporting and guidance.



## Features

- High positioning accuracy.
- Superior guidance performance and exceptional stability.
- High load capacity with enhanced rigidity.
- Simplified maintenance procedures.
- Compact design with energy-efficient operation.
- Outstanding wear resistance, low frictional resistance, and extended service life.

## Applications

- Automation industry
- Semiconductor industry
- Machine Tool industry
- Medical industry
- Robotics industry
- New Energy industry

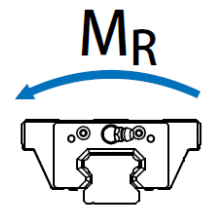
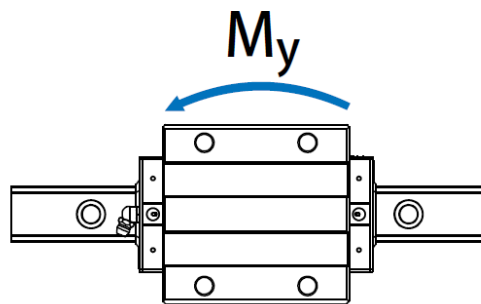
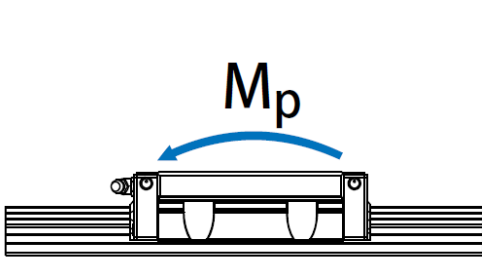
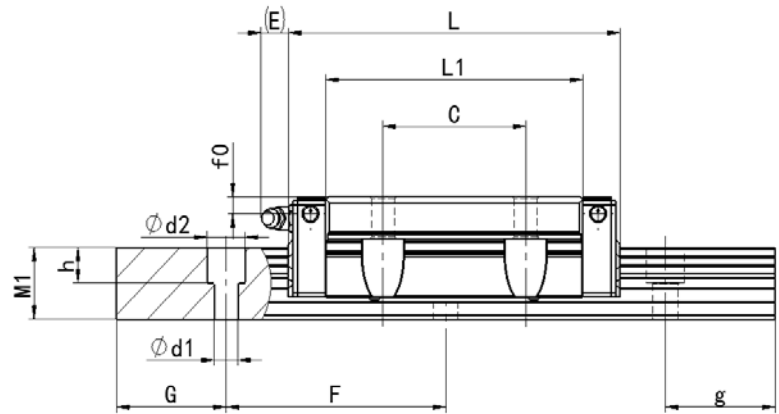
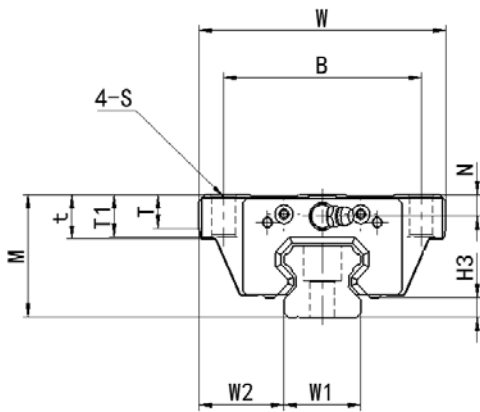
**Parameters**  
HBH-C, HBH-LC

Model	Dimensions			Slider Dimensions										H <sub>3</sub>	
	M	W	L	B	C	S	L <sub>1</sub>	T <sub>1</sub>	t	T	N	E	f0		Grease Fitting
HBH15C	24	47	61.4	38	30	M5	39.4	6.95	8.9	6	3.95	5.3	3.7	A-M4	4.3
HBH20C	30	63	77.5	53	40	M6	50.5	9.5	10	8	6	12	6	B-MT6	4.6
HBH20LC			92.2				65.2								
HBH25C	36	70	84	57	45	M8	58	10	14	8	6	12	5	B-MT6	5.5
HBH25LC			104.6				78.6								
HBH30C	42	90	98.6	72	52	M10	71.6	14.5	15.2	12	7.4	12	5.8	B-M6F	6.3
HBH30LC			120.7				93.7								
HBH35C	48	100	112.4	82	62	M10	80	13	18	10.1	9	12	12.6	B-MT6	7.5
HBH35LC			138.2				105.8								
HBH45C	60	120	139.4	100	80	M12	97	15	22	15.1	8.5	12.9	20.5	B-PT1/8	9.5
HBH45LC			171.2				128.8								
HBH55C	70	140	166.7	116	95	M14	117.7	17	26.5	17.5	12	12.9	19	B-PT1/8	13
HBH55LC			204.8				155.8								

Model	Rail Dimensions						Basic Load Rating		Allowable Static(kN·m)			Weight	
	W <sub>1</sub>	W <sub>2</sub>	M <sub>1</sub>	G g	F	d <sub>1</sub> ×d <sub>2</sub> ×h	C kN	C <sub>0</sub> kN	M <sub>P</sub>	M <sub>Y</sub>	M <sub>R</sub>	Slider kg	Rail Kg/m
HBH15C	15	16	15	20	60	4.5×7.5×5.3	11.38	16.97	0.10	0.10	0.12	0.17	1.45
HBH20C	20	21.5	17.5	20	60	6×9.5×8.5	17.75	27.76	0.20	0.20	0.27	0.40	2.21
HBH20LC							21.18	35.90	0.35	0.35	0.35	0.52	
HBH25C	23	23.5	22	20	60	7×11×9	26.48	36.49	0.33	0.33	0.42	0.59	3.21
HBH25LC							32.75	49.44	0.57	0.57	0.56	0.80	
HBH30C	28	31	24.5	20	80	9×14×12	40.8	54.1	0.53	0.53	0.66	1.09	4.47
HBH30LC							50.02	70.93	0.92	0.92	0.88	1.44	
HBH35C	34	33	29	20	80	9×14×12	49.52	69.16	0.81	0.81	1.16	1.56	6.30
HBH35LC							60.21	91.63	1.40	1.40	1.54	2.06	
HBH45C	45	37.5	38	22.5	105	14×20×17	77.57	102.71	1.55	1.55	1.98	2.79	10.41
HBH45LC							94.54	136.46	2.68	2.68	2.63	3.69	
HBH55C	53	43.5	44	30	120	16×23×20	114.44	148.33	2.64	2.64	3.69	4.52	15.08
HBH55LC							139.35	196.20	4.57	4.57	4.88	5.96	

\*All specifications are typical data and subject to change without notice due to product improvements.

## Product dimension drawing



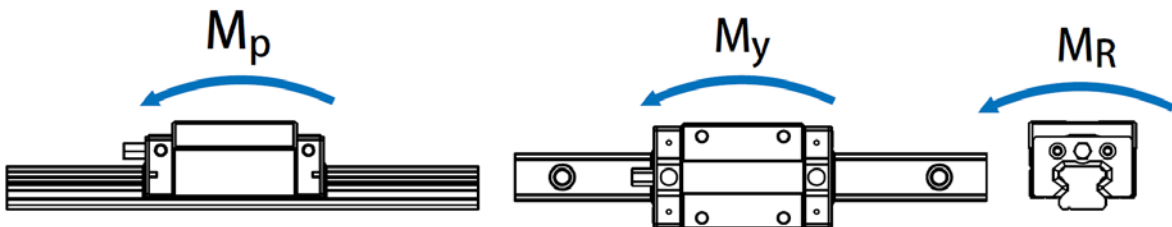
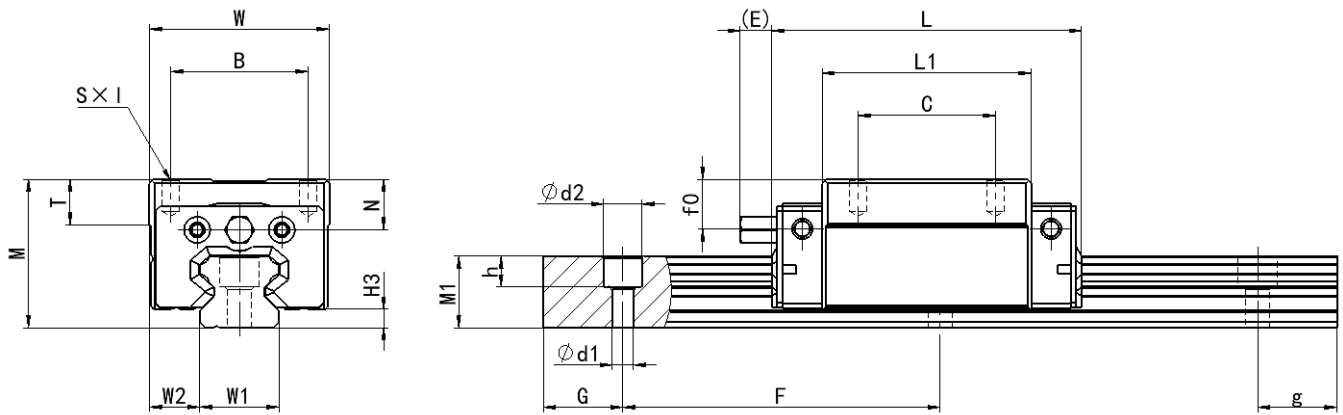
## Parameters HBH-A, HBH-LA

Model	Dimensions			Slider Dimensions									H <sub>3</sub>
	M	W	L	B	C	S×I	L <sub>1</sub>	T	N	E	f <sub>0</sub>	Grease Fitting	
HBH15A	28	34	59.5	26	26	M4×4	39.4	8.5	9.6	7	9.4	A-M4	3.1
HBH20A	30	44	73.1	32	36	M5×6	50.5	7.9	7.2	12	6.3	B-M6F	4.3
HBH20LA			92.2		50		65.2	8	6		6	B-MT6	4.6
HBH25A	40	48	84	35	35	M6×8	58	10	10	12	9	B-MT6	5.5
HBH25LA			104.6		50		78.6						
HBH30A	45	60	98.6	40	40	M8×10	71.6	14.5	10.4	12	8.8	B-M6F	6.3
HBH30LA			120.7		60		93.7						
HBH35A	55	70	112.4	50	50	M8×12	80	13	16	12	19.6	B-MT6	7.5
HBH35LA			138.2		72		105.8						
HBH45A	70	86	139.4	60	60	M10×17	97	15	18.5	12.9	30.5	B-PT1/8	9.5
HBH45LA			171.2		80		128.8						
HBH55A	80	100	166.7	75	75	M12×18	117.7	17	22	12.9	29	B-PT1/8	13
HBH55LA			204.8		95		155.8						

Model	Rail Dimensions						Basic Load Rating		Allowable Static(kN·m)			Weight	
	W <sub>1</sub>	W <sub>2</sub>	M <sub>1</sub>	G g	F	d <sub>1</sub> ×d <sub>2</sub> ×h	C kN	C <sub>0</sub> kN	M <sub>P</sub>	M <sub>Y</sub>	M <sub>R</sub>	Slide r kg	Rail Kg/m
HBH15A	15	9.5	13.5	20	60	4.5×7.5×5.8	11.4	16.97	0.10	0.10	0.12	0.18	1.45
HBH20A	20	12	16.5	20	60	6×9.5×8.5	18.6	26.2	0.20	0.20	0.27	0.30	2.21
HBH20LA			17.5				21.18	35.90	0.35	0.35	0.35	0.39	
HBH25A	23	12.5	22	20	60	7×11×9	26.48	36.49	0.33	0.33	0.42	0.51	3.21
HBH25LA							32.75	49.44	0.57	0.57	0.56	0.69	
HBH30A	28	16	24.5	20	80	9×14×12	40.8	54.1	0.53	0.53	0.66	0.88	4.47
HBH30LA							50.02	70.93	0.92	0.92	0.88	1.16	
HBH35A	34	18	29	20	80	9×14×12	49.52	69.16	0.81	0.81	1.16	1.45	6.30
HBH35LA							60.21	91.63	1.40	1.40	1.54	1.92	
HBH45A	45	20.5	38	22.5	105	14×20×17	77.57	102.71	1.55	1.55	1.98	2.73	10.41
HBH45LA							94.54	136.46	2.68	2.68	2.63	3.61	
HBH55A	53	23.5	44	30	120	16×23×20	114.44	148.33	2.64	2.64	3.69	4.17	15.08
HBH55LA							139.35	196.20	4.57	4.57	4.88	5.49	

\*All specifications are typical data and subject to change without notice due to product improvements.

## Product dimension drawing



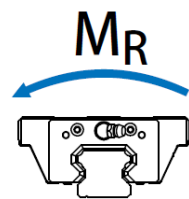
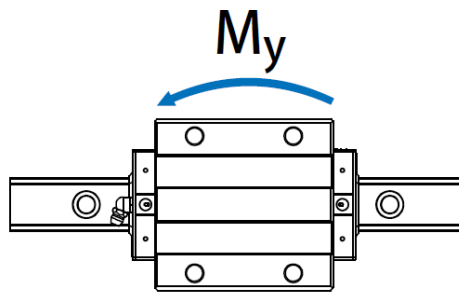
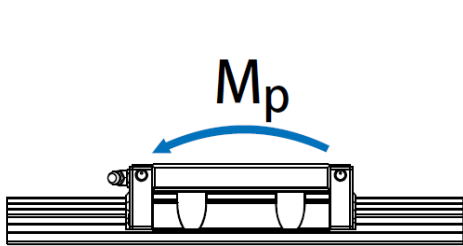
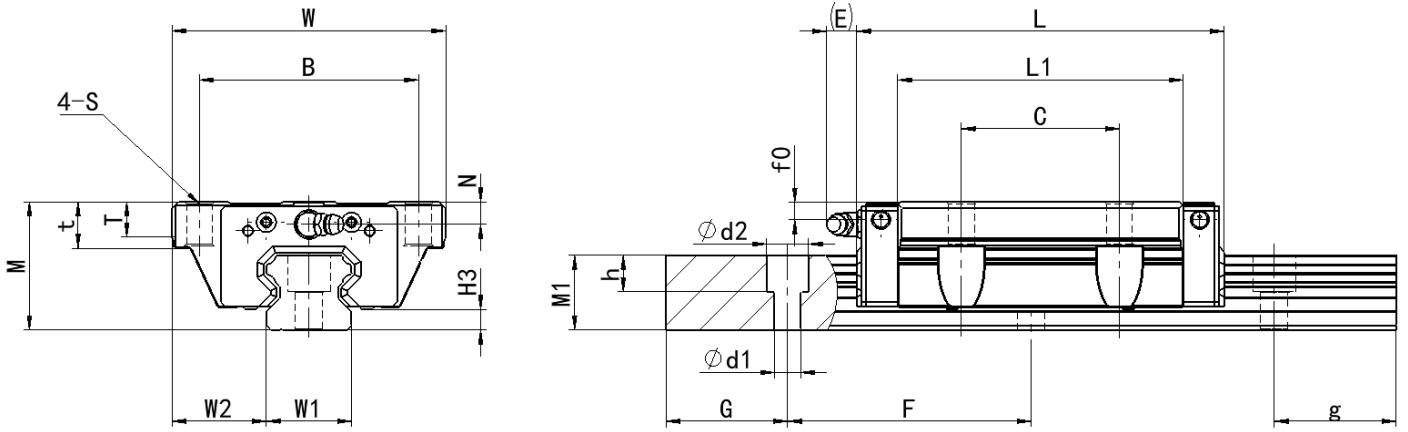
**Parameters**  
HBL-NC, HBL-C

Model	Dimensions			Slider Dimensions										H <sub>3</sub>
	M	W	L	B	C	S	L <sub>1</sub>	T	t	N	E	f <sub>0</sub>	Grease Fitting	
HBL15NC	24	52	40.1	41	-	M5	23.1	5	7	5.5	5.7	6	A-M4	4.5
HBL15C			56.8		26		39.8							
HBL20NC	28	59	50	49	-	M6	29	7	9	6	12	6	B-MT6	6
HBL20C			69.1		32		48.1							
HBL25NC	33	73	59.1	60	-	M8	35.5	7.5	10	8	12	8	B-MT6	7
HBL25C			82.6		35		59							

Model	Rail Dimensions						Basic Load Rating		Allowable Static(kN·m)			Weight	
	W <sub>1</sub>	W <sub>2</sub>	M <sub>1</sub>	G g	F	d <sub>1</sub> ×d <sub>2</sub> ×h	C kN	C <sub>0</sub> kN	M <sub>P</sub>	M <sub>Y</sub>	M <sub>R</sub>	Slider Kg	Rail Kg/m
HBL15NC	15	18.5	12.5	20	60	4.5×7.5×5.3	5.35	9.40	0.04	0.04	0.08	0.12	1.25
HBL15C							7.83	16.19	0.10	0.10	0.13	0.21	
HBL20NC	20	19.5	15.5	20	60	6×9.5×8.5	7.23	12.74	0.06	0.06	0.13	0.19	2.08
HBL20C							10.31	21.13	0.16	0.16	0.22	0.32	
HBL25NC	23	25	18	20	60	7×11×9	11.40	19.50	0.12	0.12	0.23	0.35	2.67
HBL25C							16.27	32.40	0.32	0.32	0.38	0.59	

\*All specifications are typical data and subject to change without notice due to product improvements.

## Product dimension drawing



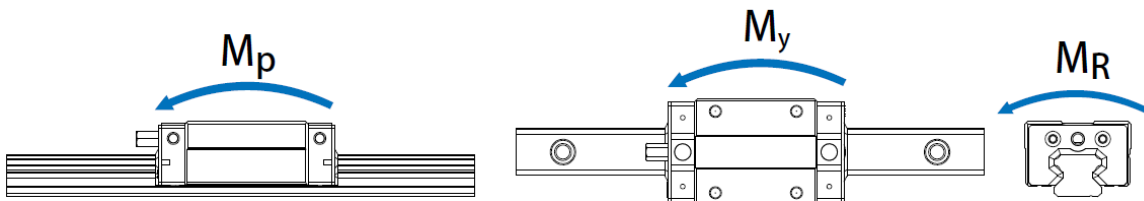
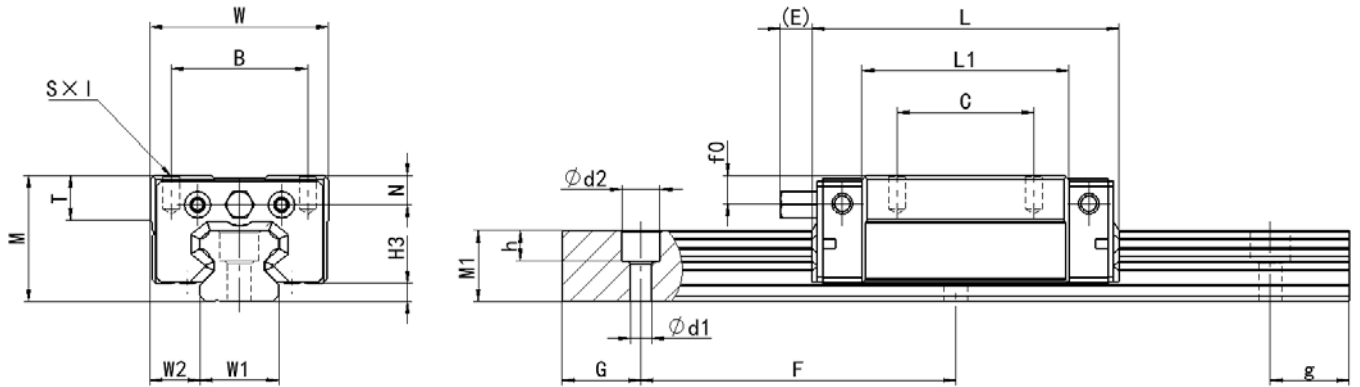
**Parameters**  
HBL-NB, HBL-B

Model	Dimensions			Slider Dimensions									H <sub>3</sub>
	M	W	L	B	C	S×I	L <sub>1</sub>	T	N	E	f0	Grease Fitting	
HBL15NB	24	34	43.2	26	-	M4×4	23.2	8.5	5.6	7	5.4	A-M4	3.1
HBL15B			59.5		26		39.5						
HBL20NB	28	42	50	32	-	M5×7	29	7.5	6	12	6	B-MT6	6
HBL20B			73.1		32	M5×6	50.5	7.9	5.2		4.3	B-M6F	4.3
HBL25NB	33	48	59.1	35	-	M6×9	35.5	8	8	12	8	B-MT6	7
HBL25B			82.6		35		59						

Model	Rail Dimensions						Basic Load Rating		Allowable Static(kN·m)			Weight	
	W <sub>1</sub>	W <sub>2</sub>	M <sub>1</sub>	G g	F	d <sub>1</sub> ×d <sub>2</sub> ×h	C kN	C <sub>0</sub> kN	M <sub>P</sub>	M <sub>Y</sub>	M <sub>R</sub>	Slider Kg	Rail Kg/m
HBL15NB	15	9.5	13.5	20	60	4.5×7.5×5.8	5.4	9.5	0.04	0.04	0.08	0.09	1.25
HBL15B			11.4				16.7	0.10	0.10	0.13	0.15		
HBL20NB	20	11	15.5	20	60	6×9.5×8.5	7.23	12.74	0.06	0.06	0.13	0.15	2.08
HBL20B			16.5				18.6	26.2	0.16	0.16	0.22	0.24	
HBL25NB	23	12.5	18	20	60	7×11×9	11.40	19.50	0.12	0.12	0.23	0.25	2.67
HBL25B			16.27				32.40	0.32	0.32	0.38	0.41		

\*All specifications are typical data and subject to change without notice due to product improvements.

## Product dimension drawing



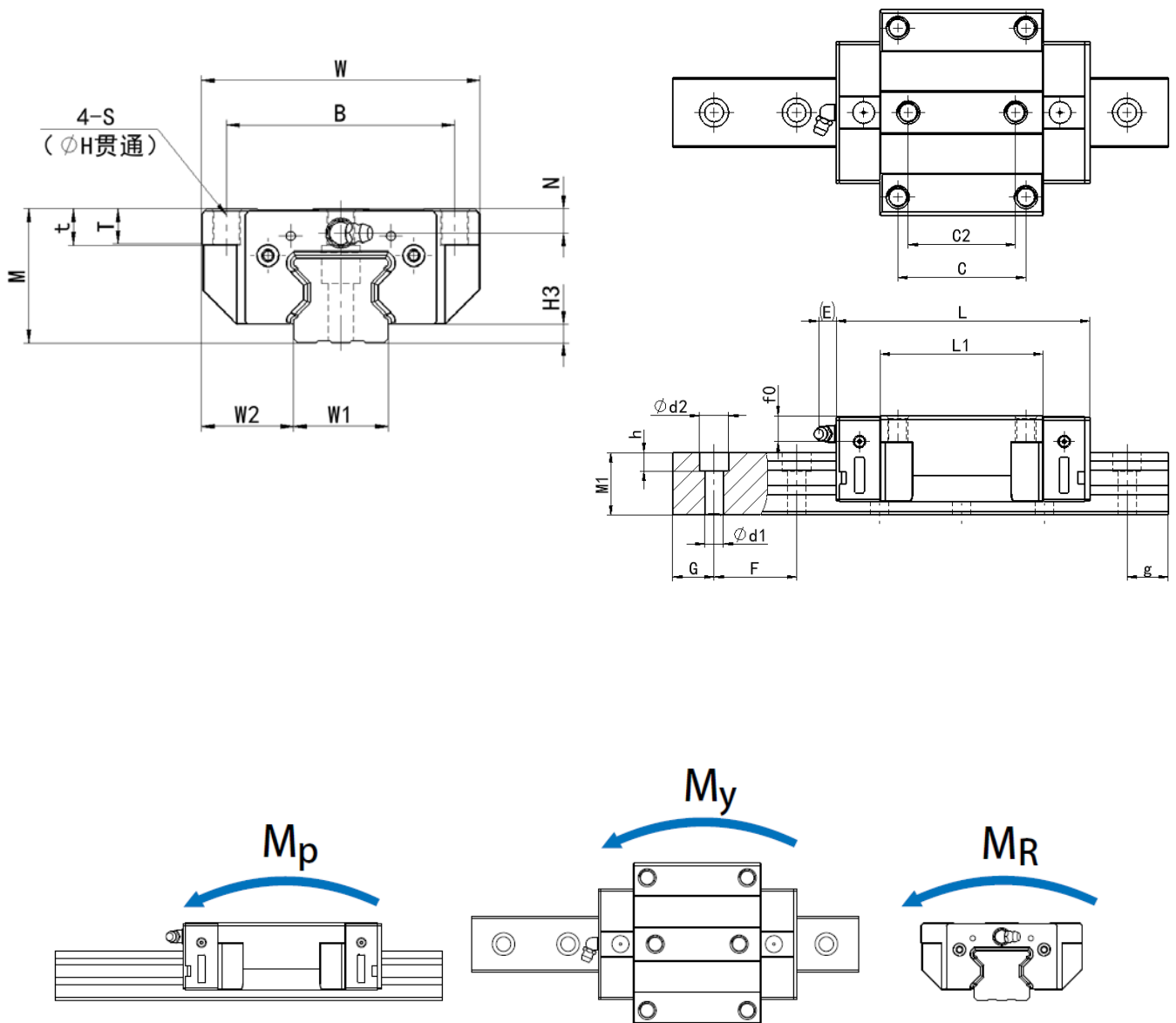
**Parameters**  
HR-C, HR-LC

Model	Dimensions			Slider Dimensions											Grease Fitting	H <sub>3</sub>
	M	W	L	B	C	C <sub>2</sub>	S	H	L <sub>1</sub>	t	T	N	E	f <sub>0</sub>		
HR30C	42	90	109.8	72	52	44	M10	8.5	71	10	9.5	6.5	12	7.3	B-MT6	6
HR30LC			131.8						93							
HR35C	48	100	124	82	62	52	M10	8.5	79	13	12	9	12	12.6	B-MT6	6.5
HR35LC			151.5						106.5							
HR45C	60	120	153.2	100	80	60	M12	10.2	106	15	14	10	12.9	14	B-PT1/8	8
HR45LC			187						139.8							
HR55C	70	140	183.7	116	95	70	M14	12.2	125.5	17	16	12	12.9	17.5	B-PT1/8	10
HR55LC			232						173.8							

Model	Rail Dimensions						Basic Load Rating		Allowable Static(kN·m)			Weight	
	W <sub>1</sub>	W <sub>2</sub>	M <sub>1</sub>	G g	F	d <sub>1</sub> ×d <sub>2</sub> ×h	C kN	C <sub>0</sub> kN	M <sub>P</sub>	M <sub>Y</sub>	M <sub>R</sub>	Slide r Kg	Rail Kg/m
HR30C	28	31	28	20	40	9×14×12	39.1	82.1	1.06	1.06	1.445	1.06	4.41
HR30LC							48.1	105	1.712	1.712	1.846	1.42	
HR35C	34	33	30.2	20	40	9×14×12	57.9	105.2	1.44	1.44	2.17	1.61	6.06
HR35LC							73.1	142	2.6	2.6	2.93	2.21	
HR45C	45	37.5	38	22.5	52.5	14×20×17	92.6	178.8	3.05	3.05	4.52	3.22	9.97
HR45LC							116	230.9	5.47	5.47	6.33	4.41	
HR55C	53	43.5	44	30	60	16×23×20	130.5	252	5.4	5.4	8.01	5.18	13.98
HR55LC							167.8	348	10.25	10.25	11.15	7.34	

\*All specifications are typical data and subject to change without notice due to product improvements.

## Product dimension drawing



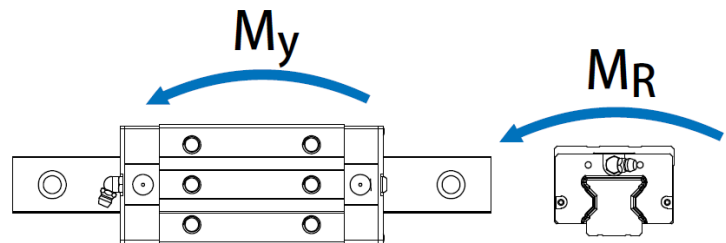
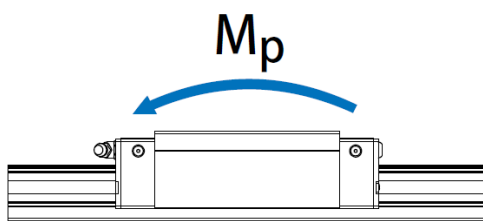
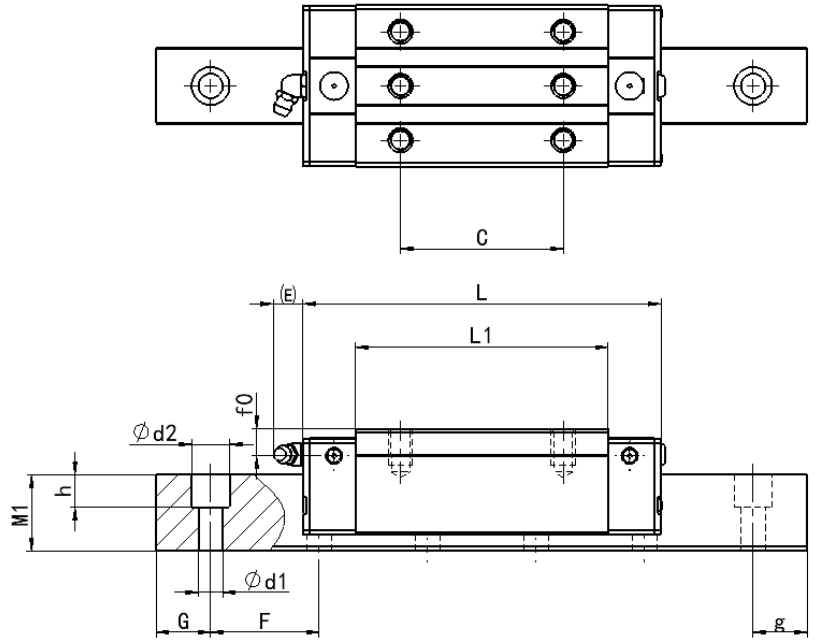
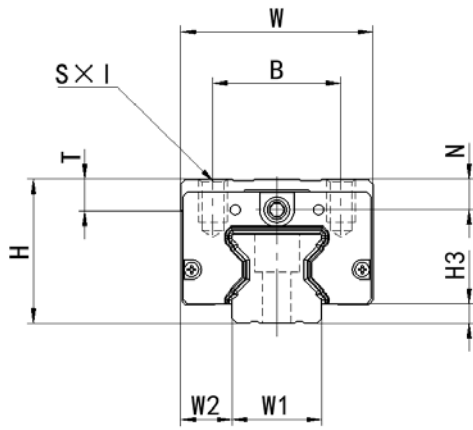
**Parameters**  
HR-A, HR-LA

Model	Dimensions			Slider Dimensions									H <sub>3</sub>
	M	W	L	B	C	S	L <sub>1</sub>	T	N	E	f <sub>0</sub>	Grease Fitting	
HR30A	45	90	109.8	40	40	M8×10	71	9.5	9.5	12	10.3	B-MT6	6
HR30LA			131.8		60		93						
HR35A	55	100	124	50	50	M8×12	79	12	16	12	19.6	B-MT6	6.5
HR35LA			151.5		72		106.5						
HR45A	70	120	153.2	60	60	M10×17	106	16	20	12.9	24	B-PT1/8	8
HR45LA			187		80		139.8						
HR55A	80	140	183.7	75	75	M12×18	125.5	17.5	22	12.9	27.5	B-PT1/8	10
HR55LA			232		95		173.8						

Model	Rail Dimensions						Basic Load Rating		Allowable Static(kN·m)			Weight	
	W <sub>1</sub>	W <sub>2</sub>	M <sub>1</sub>	G g	F	d <sub>1</sub> ×d <sub>2</sub> ×h	C kN	C <sub>0</sub> kN	M <sub>P</sub>	M <sub>Y</sub>	M <sub>R</sub>	Slide r Kg	Rail Kg/m
HR30A	28	16	28	20	40	9×14×12	39.1	82.1	1.06	1.06	1.445	0.82	4.41
HR30LA							48.1	105	1.712	1.712	1.846	1.07	
HR35A	34	18	30.2	20	40	9×14×12	57.9	105.2	1.44	1.44	2.17	1.43	6.06
HR35LA							73.1	142	2.6	2.6	2.93	1.86	
HR45A	45	20.5	38	22.5	52.5	14×20×17	92.6	178.8	3.05	3.05	4.52	2.97	9.97
HR45LA							116	230.9	5.47	5.47	6.33	3.97	
HR55A	53	23.5	44	30	60	16×23×20	130.5	252	5.4	5.4	8.01	4.62	13.98
HR55LA							167.8	348	10.25	10.25	11.15	6.4	

\*All specifications are typical data and subject to change without notice due to product improvements.

## Product dimension drawing



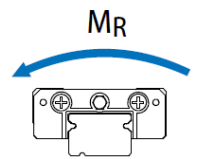
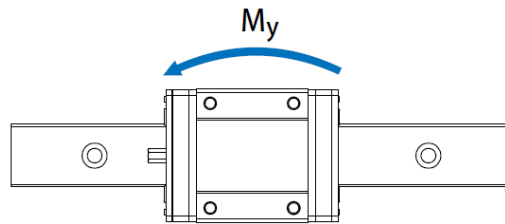
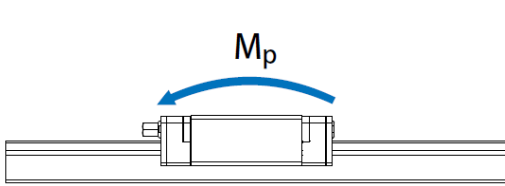
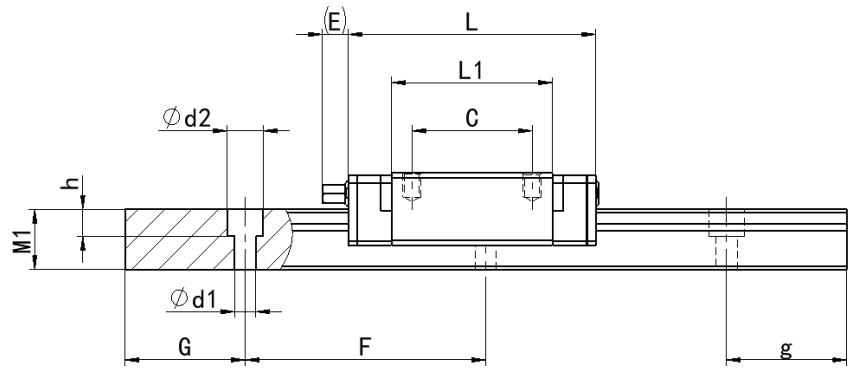
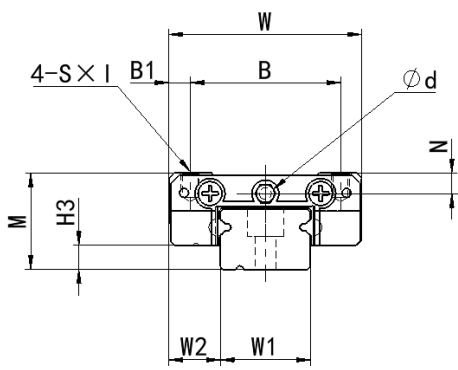
## Parameters HBH-C, HBH-LC

Model	Dimensions			Slider Dimensions								H <sub>3</sub>
	M	W	L	B	B <sub>1</sub>	C	L <sub>1</sub>	N	E	d	S×I	
HBM5NA	6	12	15.8	8	4	-	9.6	1.15	-	Ø1	M2×1.5	1
HBM5A			18.8			7	12.6					
HBM7NA	8	17	18.6	12	2.5	-	9.6	1.5	-	Ø1.2	M2×2.5	1.5
HBM7A			22.5			8	13.5					
HBM7LA			30.8			13	21.8					
HBM9NA	10	20	21.5	15	2.5	-	11.9	1.8	-	Ø1.4	M3×3	2
HBM9A			28.9			10	18.9					
HBM9LA			39.9			16	29.9					
HBM12NA	13	27	26.0	20	3.5	-	13.0	2.5	-	Ø2	M3×3.5	3
HBM12A			34.7			15	21.7					
HBM12LA			45.4			20	32.4					
HBM15A	16	32	42.1	25	3.5	20	26.7	3	4.5	M3	M3×4	4
HBM15LA			58.5			25	43.4					

Model	Rail Dimensions						Bolt mm	Basic Load Rating		Allowable Static(kN·m)			Weight	
	W <sub>1</sub>	W <sub>2</sub>	M <sub>1</sub>	d <sub>1</sub> ×d <sub>2</sub> ×h	G g	F		C kN	C <sub>0</sub> kN	M <sub>R</sub>	M <sub>P</sub>	M <sub>Y</sub>	Slide r kg	Rail Kg/ m
HBM5NA	5	3.5	3.7	2.4×3.6×0.8	5	15	M2×6	0.56	0.84	2.20	1.20	1.20	0.0034	0.12
HBM5A								0.67	1.08	2.90	1.90	1.90	0.0043	
HBM7NA	7	5	4.8	2.4×4.2×2.3	5	15	M2×6	0.70	0.78	2.89	1.68	1.68	0.0067	0.22
HBM7A								0.98	1.24	4.70	2.84	2.84	0.010	
HBM7LA								1.37	1.96	7.64	4.80	4.80	0.015	
HBM9NA	9	5.5	6.5	3.5×6×3.5	7.5	20	M3×8	1.36	1.62	7.06	2.90	2.90	0.011	0.38
HBM9A								1.86	2.55	11.76	7.35	7.35	0.016	
HBM9LA								2.55	4.02	19.60	18.62	18.62	0.026	
HBM12NA	12	7.5	8	3.5×6×4.5	10	25	M3×8	2.17	2.61	16.99	5.19	5.19	0.022	0.65
HBM12A								2.84	3.92	25.48	13.72	13.72	0.034	
HBM12LA								3.72	5.88	38.22	36.26	36.26	0.054	
HBM15A	15	8.5	10	3.5×6×4.5	15	40	M3×10	4.61	5.59	45.08	21.56	21.56	0.059	1.06
HBM15LA								6.37	9.11	73.50	57.82	57.82	0.092	

\*All specifications are typical data and subject to change without notice due to product improvements.

## Product dimension drawing



## Parameters HBM-W

Model	Dimensions			Slider Dimensions								H <sub>3</sub>
	M	W	L	B	B <sub>1</sub>	C	L <sub>1</sub>	N	E	d	S×I	
HBM7WA	9	25	31.2	19	3	10	21	1.85	-	Ø1.2	M3×3	1.9
HBM7WLA			41			19						
HBM9WA	12	30	39.3	21	4.5	12	27.5	2.4	-	Ø1.2	M3×3	2.9
HBM9WLA			50.7	23	3.5	24	38.5					
HBM12WA	14	40	46.1	28	6	15	31.3	2.8	-	Ø1.2	M3×3.6	3.4
HBM12WLA			60.4			28	45.6					
HBM15WA	16	60	54.8	45	7.5	20	38	3.	5.2	M3	M4×4.2	3.4
HBM15WLA			73.8			35	57					

Model	Rail Dimensions							Bolt mm	Basic Load Rating		Allowable Static(kN·m)			Weight	
	W <sub>1</sub>	W <sub>2</sub>	W <sub>3</sub>	M <sub>1</sub>	G g	F	d <sub>1</sub> ×d <sub>2</sub> ×h		C kN	C <sub>0</sub> kN	M <sub>P</sub>	M <sub>Y</sub>	M <sub>R</sub>	Slid er Kg	Rail Kg/ m
HBM7WA	14	5.5	-	5.2	10	30	9×14 ×12	M3× 6	1.37	2.06	15.70	7.14	7.14	0.02 0	0.51
HBM7WLA									1.77	3.14	23.45	15.5 3	15.53	0.02 9	
HBM9WA	18	6	-	7	10	30	9×14 ×12	M3× 8	2.75	4.12	40.12	18.9 6	18.96	0.04 0	0.91
HBM9WLA									3.43	5.89	54.54	34.0 0	34.00	0.05 7	
HBM12WA	24	8	-	8.5	15	40	14×2 0×17	M4× 8	3.92	5.59	70.34	27.8	27.80	0.07 1	1.49
HBM12WLA									5.10	8.24	102.7 0	57.3 7	57.37	0.10 3	
HBM15WA	42	9	23	9.5	15	40	16×2 3×20	M4× 10	6.77	9.22	199.3 4	56.6 6	56.66	0.14 3	2.86
HBM15WLA									8.93	13.38	299.0 1	122. 6	122.6	0.21 5	

\*All specifications are typical data and subject to change without notice due to product improvements.

## Product dimension drawing

